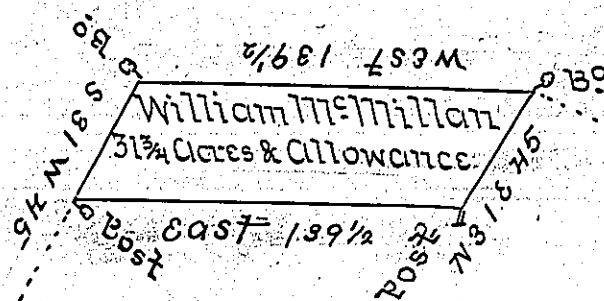


William McMillan's land

John Patrick's claim

1395
708
687



other land of which this a part

The above described piece of land containing thirty one Acres and three quarters and the Allowance of Six Percent Situate in Berry Township in the County of Westmoreland is part of a Tract surveyed to Herman Girth on his Warrant dated Nov^r 10th 1785 - the above described piece surveyed at the request of William McMillan May 5th 1806 -

P. John Moore U.S

Samuel Cochran Esq^r }
 Surve^r Gen^l of Penna^a }

IN TESTIMONY that the above is a copy of the original remaining on file in the Department of Internal Affairs of Pennsylvania, made conformably to an Act of Assembly approved the 16th day of February, 1833, I have hereunto set my Hand and caused the Seal of said Department to be affixed at Harrisburg, this thirteenth day of January 1905.

George P. Brown
 Secretary of Internal Affairs